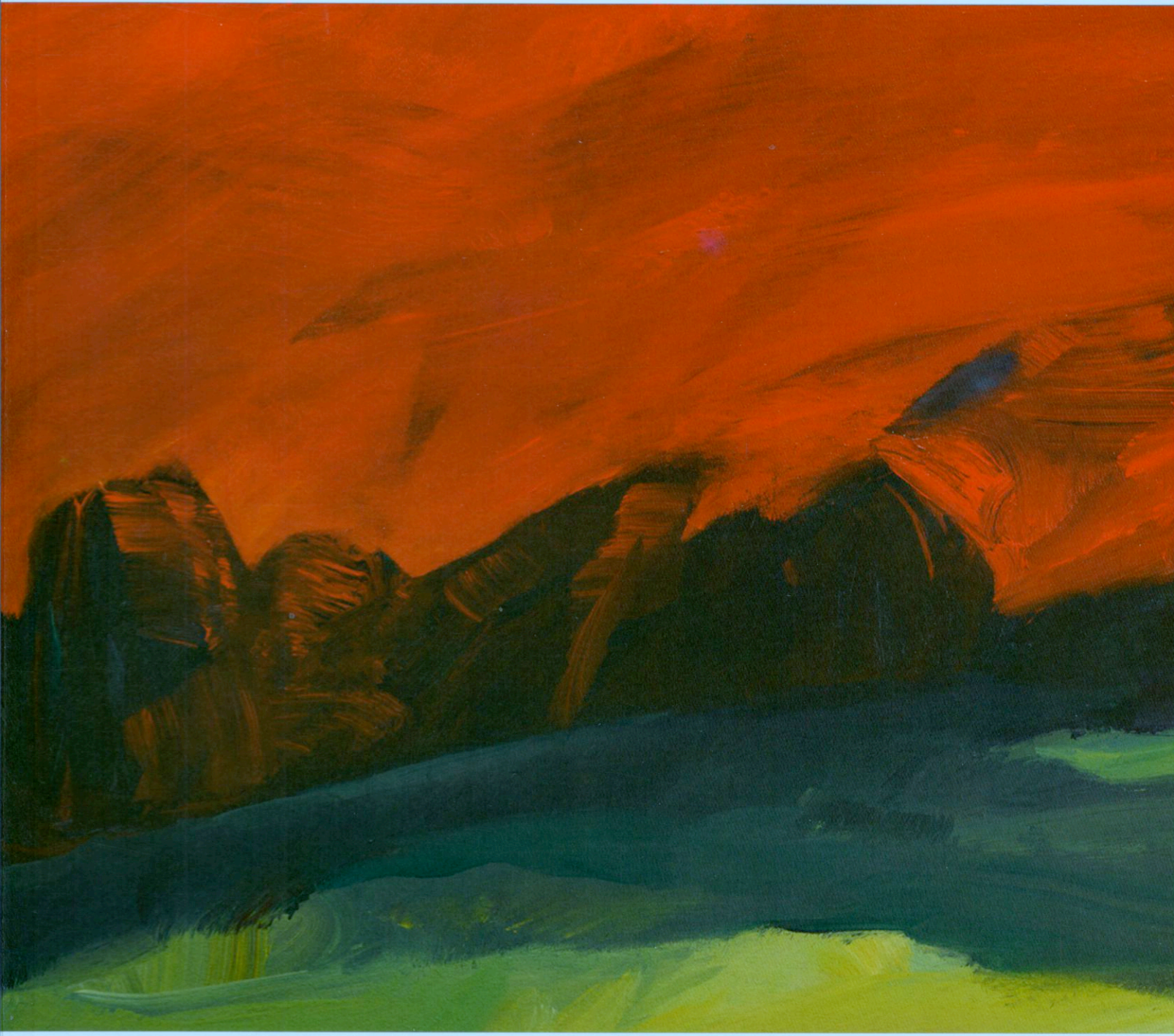




27TH ANNUAL

SANTA FE WINE & CHILE FIESTA



SEPTEMBER 24 - OCTOBER 1, 2017

SANTAFEWINEANDCHILE.ORG



SFW&C FIESTA FEATURED ARTIST 2017

DICK EVANS

Dick Evans was born in the "Land of Enchantment," New Mexico, USA. Having grown up in a rural farming community in the panhandle of Texas, he had no exposure at all to art until he started college. He soon realized architecture was not right for him but also that he loved ART! As he progressed through an advertising art program at Texas Tech, he realized he was more interested in the Fine Arts and transferred to a rich art program at the University of Utah, where he obtained a BFA in Drawing and Painting and went on to obtain an MFA in Ceramics and Sculpture.

After completing college, Evans began a university teaching career. His first position was back at the university where he began as a student, Texas Tech. He taught courses in ceramics, drawing and design. At the age of twenty-nine he was granted tenure.

Uneasy about settling into one area so early in life he resigned within the month and set out on his own with his wife and two children, establishing studios in Northern New Mexico in which he produced sculpture and ceramics. He spent three years teaching art at the University of New Mexico. In 1975 he married sculptor Susan Stamm Evans, with whom he is still married. Also in 1975 he took a position teaching art at the University of Wisconsin-Milwaukee. Evans progressed through the professorial ranks to tenure, full professorship and also a two-year stint as Associate Dean of the School of Fine Arts.

In 1987 the Evans' made the decision to leave academia and devote full time to their art. In 1990 they decided to return to New Mexico. In 1991, after several years of creating ceramic murals, he decided to return to his early love of painting. Evans' art is found in 17 Art Museums and over a dozen Corporate collections. He has had over 30 solo shows as well as numerous group shows and invitational shows. Examples of his work are found in 7 books and many periodicals and publications.

ABOVE: *DARK FORM WITH RED SKY* BY DICK EVANS, 2016, 30" X 30" OIL, FOR SFWC