

SPECIAL 32ND ANNIVERSARY ISSUE

# Southwest Art

MAY 2003

## California Painters

*Dan McCaw and 8 other Golden  
State artists share their visions*

**PLUS:**

**Kent Ullberg sculpts the  
world's largest wildlife  
monument**

[www.southwestart.com](http://www.southwestart.com)

\$5.99US \$7.99CAN

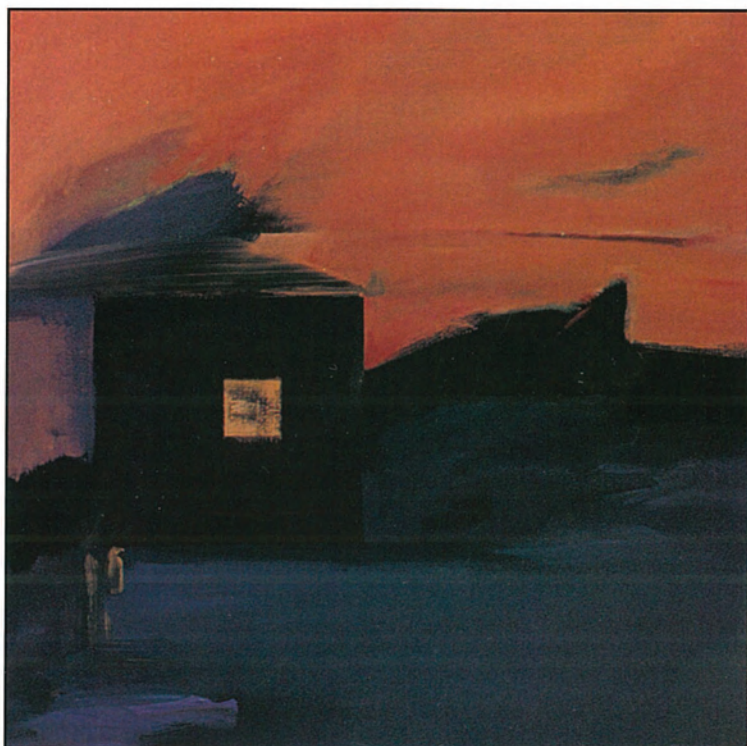
05



0 71658 03298 9

## NEW MEXICO

BEST OF THE WEST



YELLOW IN BLACK WITH ORANGE BY DICK EVANS

## Exploring Nature's Enigmas

**SANTA FE....** New paintings by Dick Evans are on view at Joyce Robins Gallery this month in a one-man show titled *Focus of Enigma*. Evans says he has always been intrigued by the unique, the idiosyncratic, and the weird in nature. "There is all this information around us—much of it strange or in flux," he says. "As an artist I focus on the perplexing parts, using the tools of art—line, color, contrast, movement, shape, form—to entice viewers into the mysterious." In this show the viewer joins Evans on his travels into nature's obscure realms. Robins notes that "there is a point of entry in each of the paintings, but then you must find your own way through colors and forms that are at times familiar and recognizable and at other times mystifying." Meet the artist at a reception on May 23 from 5:30 to 7:30 p.m.

Dick Evans: *Focus of Enigma*, May 23-June 6, Joyce Robins Gallery, 505.989.8795, [www.joycerobins.com](http://www.joycerobins.com)

## Collectors Sale

**SANTA FE....** Altermann Galleries' 23rd annual *Collectors Sale* takes place on Memorial Day weekend at The Bishop's Lodge, one of Santa Fe's largest resorts. This is the first time the event is being held in Santa Fe rather than in Dallas, TX. It features a set-price sale on the evening of May 23 and an auction on the afternoon of May 24. The auction includes paintings by Roy Andersen, O.E. Berninghaus, E.I. Couse, Gerard Curtis Delano, W.H. Dunton, Frank McCarthy, R. Brownell McGrew, Carl Rungius, Joseph Sharp, and Eric Sloane.

*Collectors Sale*, May 23-24, The Bishop's Lodge, 505.820.1644, [www.altermann.com](http://www.altermann.com)

## Traces of the Journey

**ALBUQUERQUE....** Works by women artists from New Mexico are on view at the Albuquerque Museum this month in *Originals 2003: Traces of the Journey*, a show sponsored by the New Mexico Committee of the National Museum of Women in the Arts. Invited artists Susan Contreras, Janet Lippincott, Roxanne Swentzell, and Melissa Zink are joined by 68 artists from around the state who were selected by juror Susan Sterling, curator at the National Museum of Women in the Arts in Washington, DC. This is the third biennial show sponsored by New Mexico Women in the Arts.

*Originals 2003: Traces of the Journey*, April 27-July 20, Albuquerque Museum, 505.243.7255, [www.albuquerquemuseum.com](http://www.albuquerquemuseum.com)



MIDNIGHT DREAMS BY JILL TISHMAN